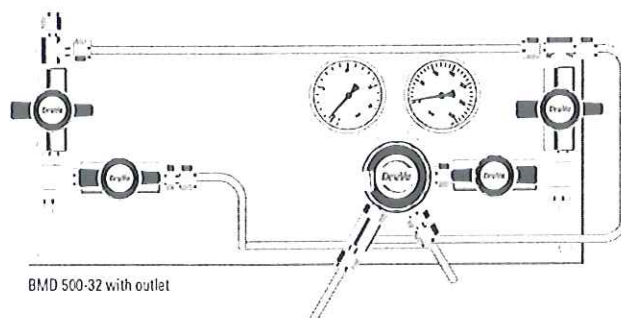




# Gas supply panel BMD 500-32



## Features

This gas supply panel can reduce an inlet pressure of maximum 200 bar to back pressure values ranging from 1 to 12/2.5 to 50 (10 to 230 optional) bar. The BMD 500-32 is mounted on a stainless steel console and consists of pressure regulator and inlet and outlet pressure gauges. A process gas shut-off valve is located on each inlet side. A relief valve is connected to the flush outlet pipe. The gas supply is not interrupted during cylinder change. Switching from the empty cylinder to the full cylinder occurs manually. A choice of stainless steel coils or flexible high pressure tubes is available for the connection to the gas cylinder. The use of contact pressure gauges (accessories) facilitates monitoring of the gas reserves.

## Application

The BMD 500-32 is a stationary pressure reducing station for the continuous gas supply and is used at the first pressure level both for centralized and decentralized gas supply systems. Standard application: centralized or decentralized gas supply for highly sensitive analysis device.

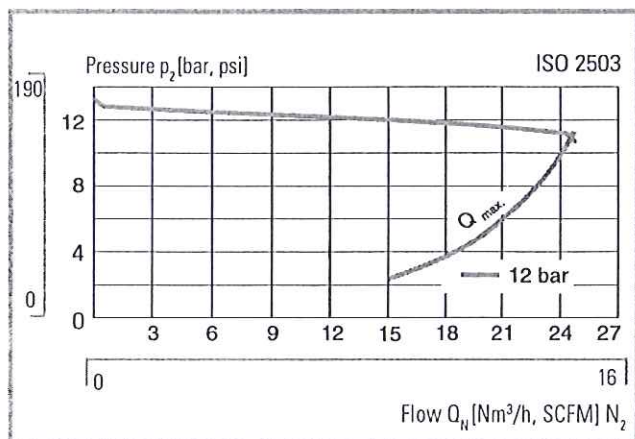
Single-stage gas supply panel, connection for 2 x 1 cylinders, extension for 2 x 4 cylinders, with internal purge device, manual change over, for inert, reactive, flammable and oxidizing gas and gas mixtures of middle up to high purity.

Nominal pressure 230 bar / 3300 psi

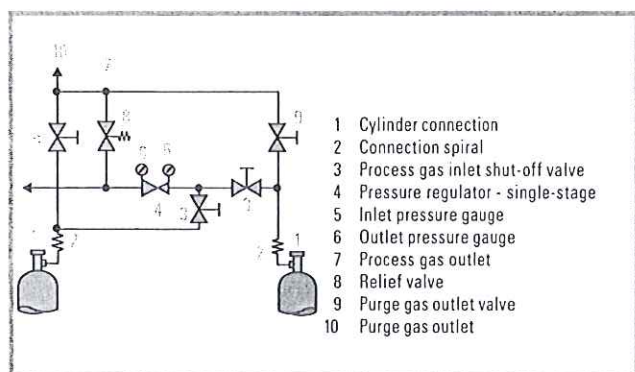
## Highlights

- ▲ Continuous gas supply during cylinder change
- ▲ Fast switch-over to the reserve side
- ▲ Gas purity is maintained during cylinder change by internal gas purging
- ▲ Low pressure warning by means of contact pressure gauges (optionally available)

## Flow chart



## Flow scheme



## Technical data

Body material:	stainless steel 316L (1.4404) specially cleaned and electropolished or brass 2.0401.26 specially cleaned, plated and chromed
Sealing material:	PCTFE
Weight:	4,0 kg
Dimensions: (wxhxd):	440 x 200 x 185 mm
Pressure gauge range:	-1 - 18, 0 - 80, (optional 0 - 315) bar -14,5 - 261, 0 - 1161, (optional 0 - 4572) psi
Process gas inlet	M 14 x 1,5
Process gas outlet	NPT 1/4" f (female)

## Order code

BMD 500-32	M	D	V6M	gas
Type BMD 500-32				specification of used gas
Material pressure regulator M = brass E = stainless steel				
Outlet pressure D = 1 - 14 bar, 15 - 200 psi E = 2,5 - 50 bar, 36 - 726 psi (optional: F = 10 - 230 bar, 145 - 3300 psi)				
			Outlet connection material O = expl., V6, V8, V10, V12 [z. B. V6 = tube fitting with outer diameter 6mm]. M = brass E = stainless steel	

For proper installation and service of this panel a gas specific cylinder connection is necessary. Please indicate used gas and connection standard in case of ordering. See in chapter Accessory „Cylinder connection FA 500“.